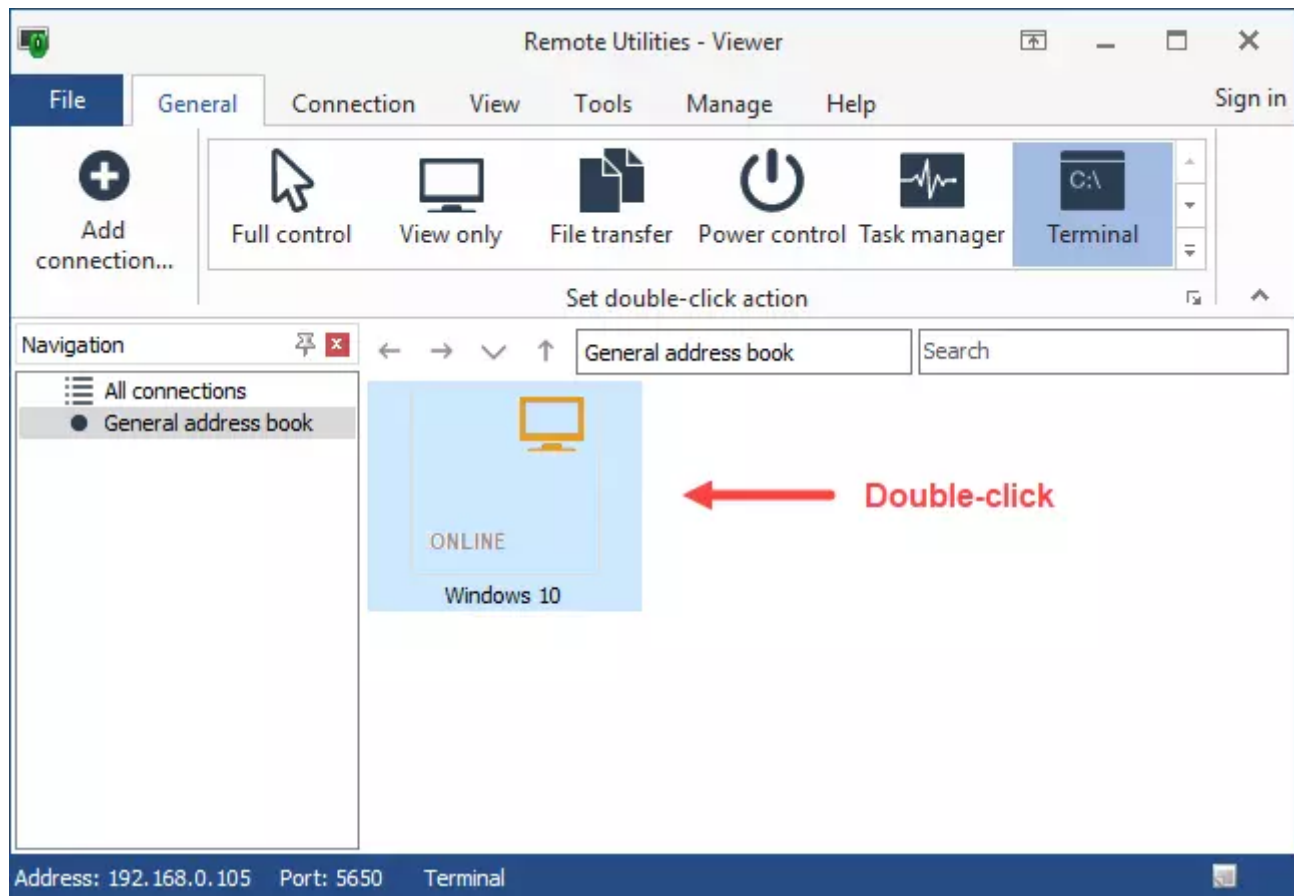


Terminal

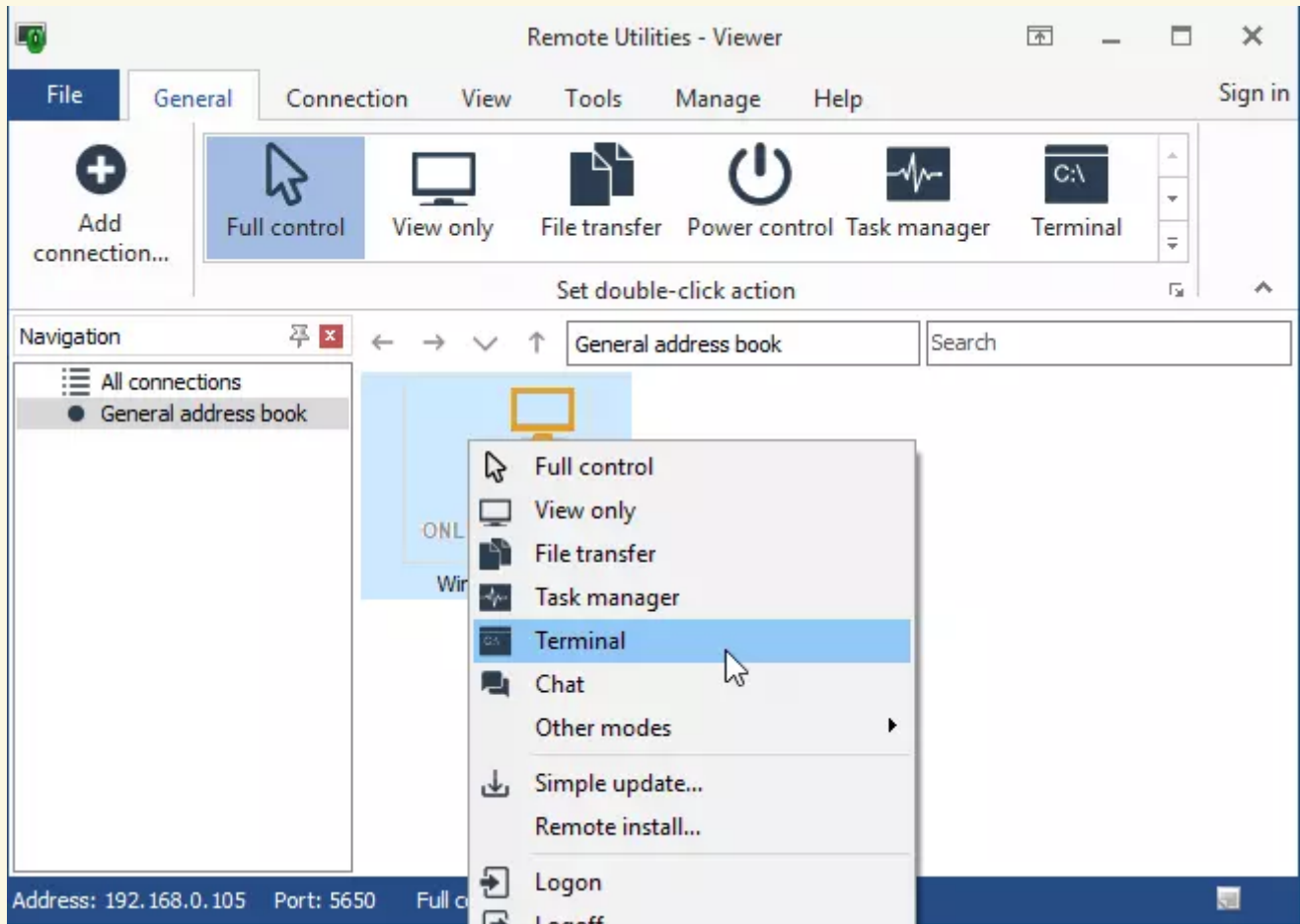
The **Terminal** mode gives you full access to the command line on the remote computer. You can work in this mode the same way as you work with the `cmd.exe` system tool.

Starting Terminal mode

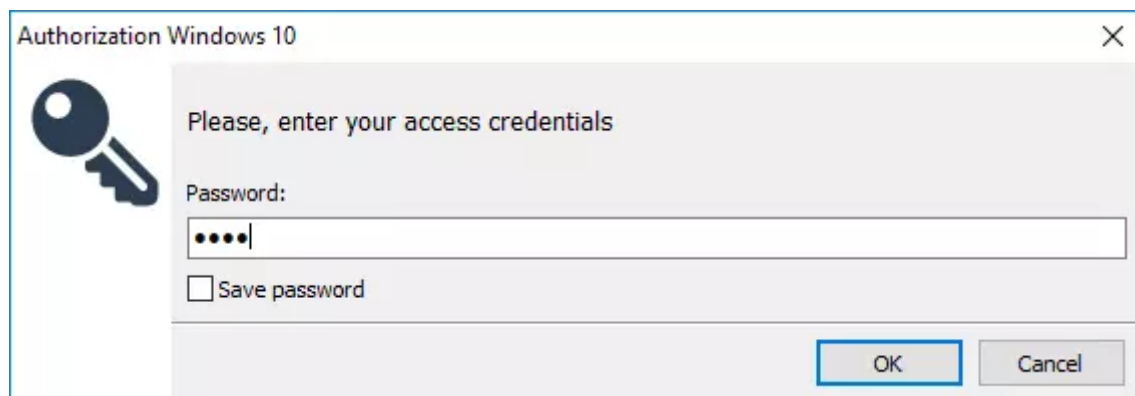
On the **General** tab select **Terminal** and double-click on a connection in your *address book*:



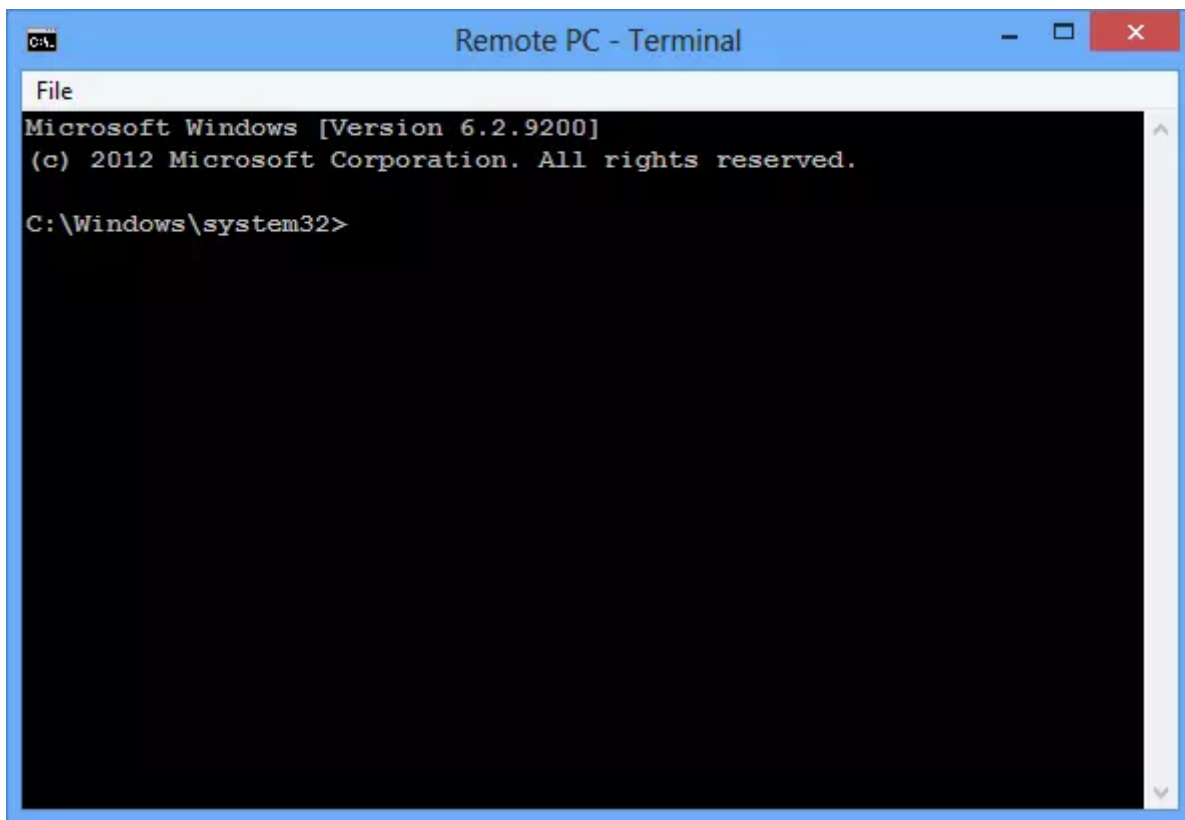
Alternatively, right-click on the connection icon and select **Terminal** from the menu:



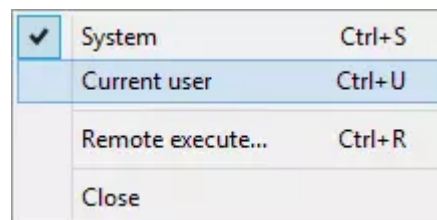
Enter the access password and click **OK**:



The **Terminal** window will open:



It is possible to work both as a system account and as the current interactive account. To switch between the accounts use the **File** menu:



👉 Important!

Remote execute menu item launches the Execute connection mode.

Related articles

- [About Remote Utilities: Viewer](#)
- [Connection modes: Execute](#)
- [Connection modes: Inventory manager](#)
- [Connection modes: Remote registry](#)
- [Connection modes: Task manager](#)

URL: <https://www.remoteutilities.com/support/docs/terminal/>