

Scanning for hosts

Contents

[Opening the Host scanner](#)

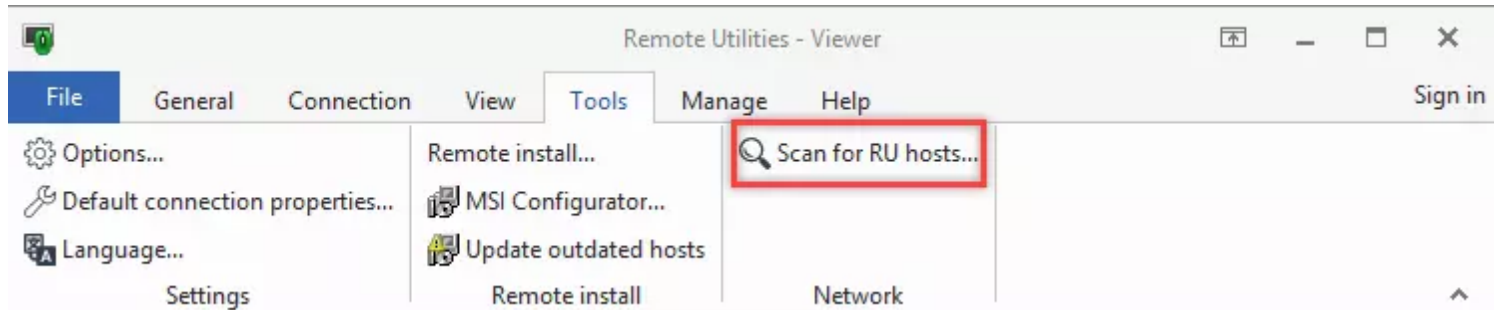
[Scanning for Hosts](#)

[Adding found Hosts to address book](#)

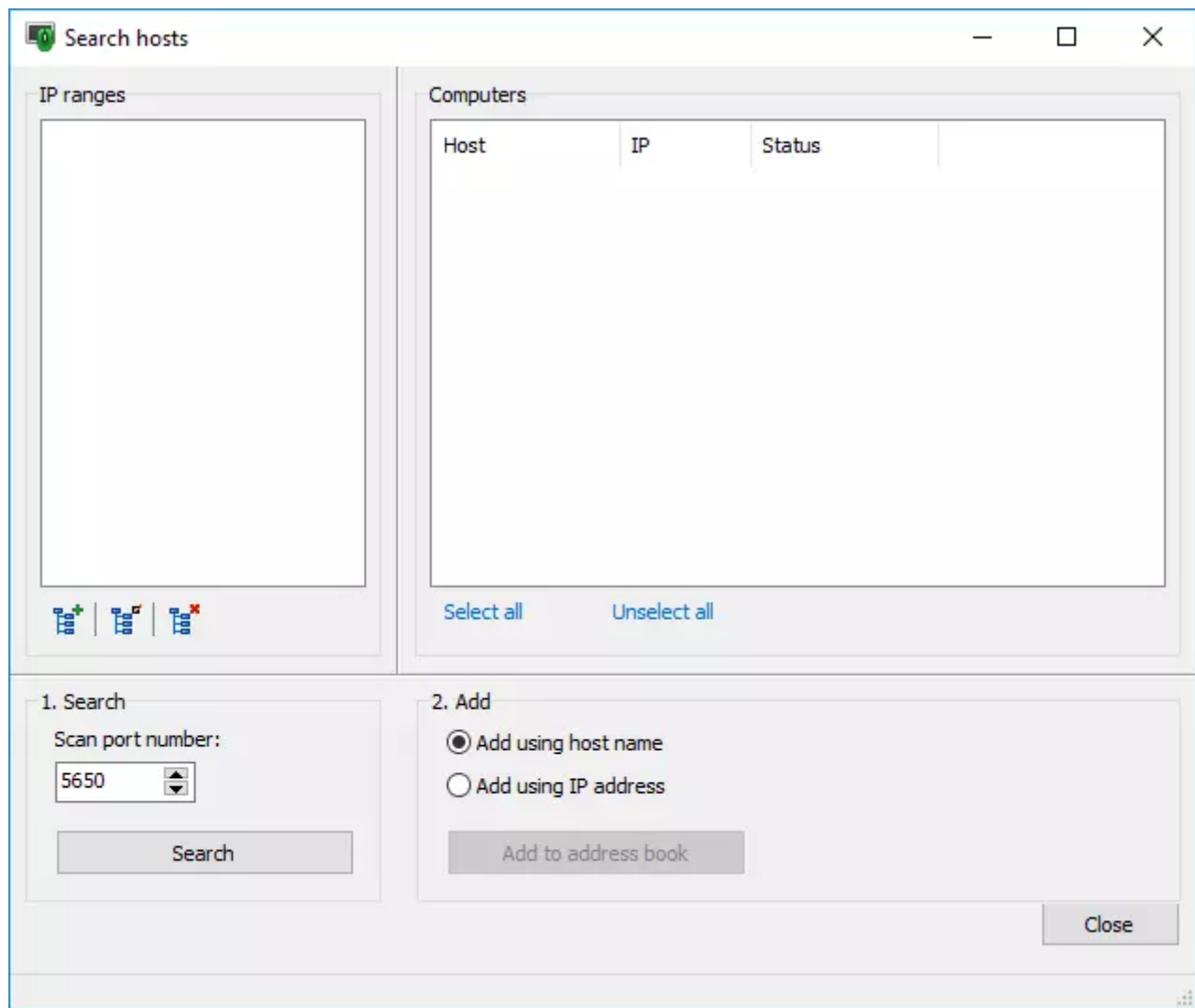
The *Viewer* has a built-in system of searching the network for Hosts. You can scan a single IP address or an IP address range. The search uses multiple threads, which allows large network segments to be scanned within a very short time. It is possible to specify the number of search threads in [Viewer options](#).

Opening the Host scanner

To open the Host scanner, in the Viewer open the **Tools** tab and click the **Scan for RU hosts** button:

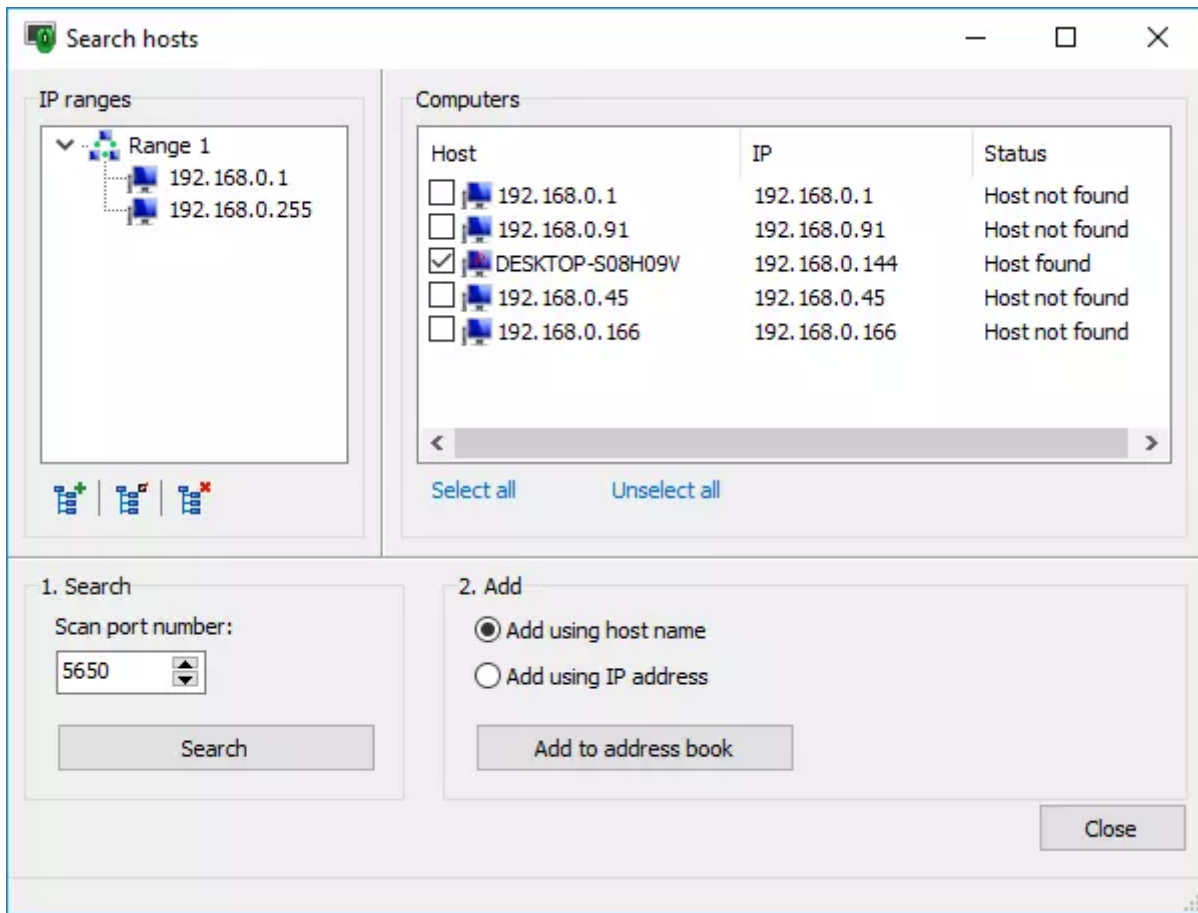


The scanner window will open:



Scanning for Hosts

In the left pane specify the range of IP addresses to scan. You can also enter multiple ranges. Use the buttons  for adding, editing or deleting IP addresses or ranges.



In the **Scan port number** field specify the Host's listening port to scan (5650 is the default value). Click the **Search** button to start the scan.

Scan results are displayed in the right pane. The following notation is used:

- The computer is offline.
- The computer is online, no Host detected.
- The computer is online, an installed Host detected.

Adding found Hosts to address book

To add found Hosts as new connections to your currently selected *address book* (or a folder in an address book) select the Hosts in the search results and click **Add to address book**.

Related articles

- [About Remote Utilities: Host](#)
- [Address book: About address books](#)
- [Address book: Adding connections](#)
- [Ports and port forwarding: Ports used by Remote Utilities](#)

URL: <https://www.remoteutilities.com/support/docs/scanning-for-hosts/>