

# Remote registry

---

## Contents

Starting Remote Registry mode

Main menu

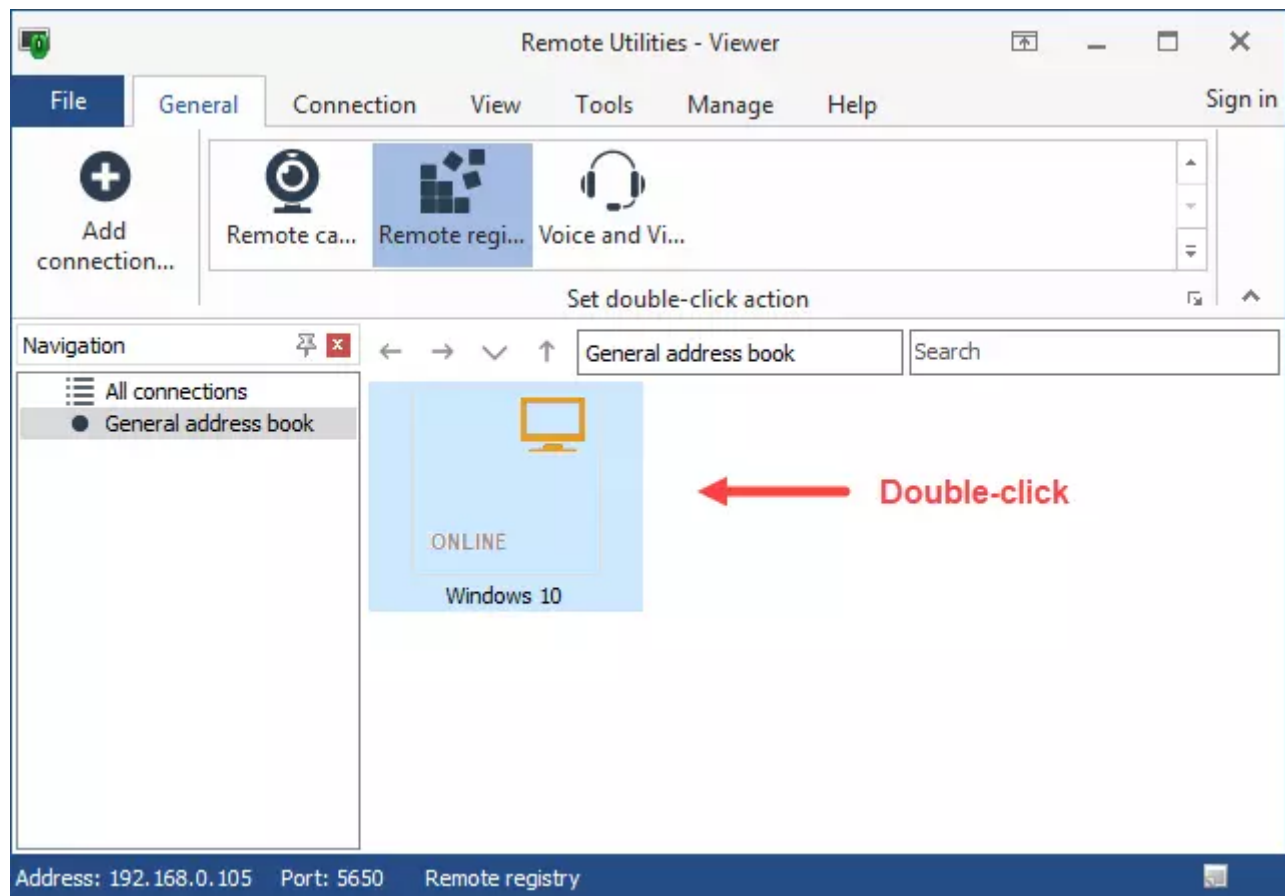
File menu

Edit menu

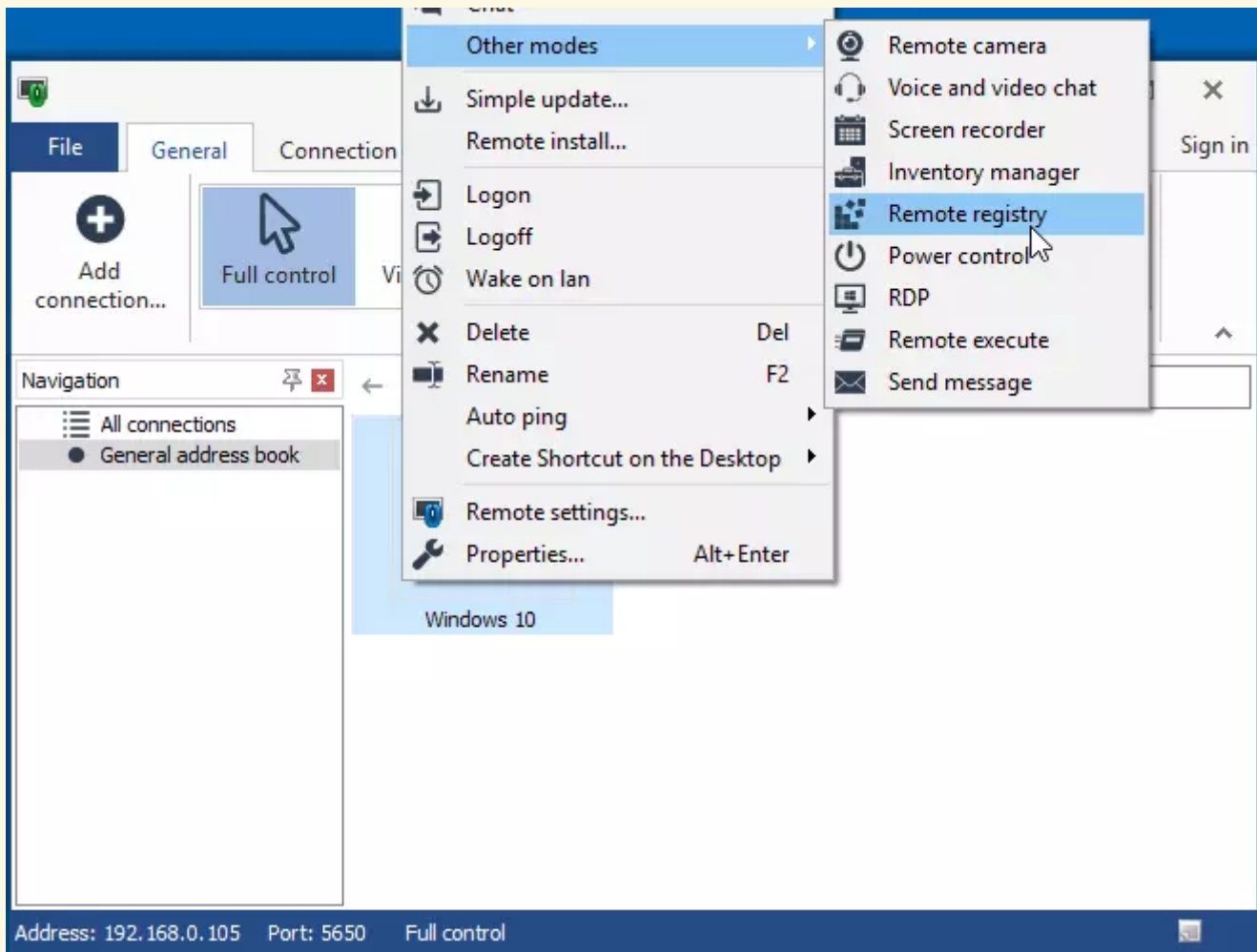
The **Remote registry** connection mode allows you to edit remote PC registry just like the Windows `regedit.exe` utility.

## Starting Remote Registry mode

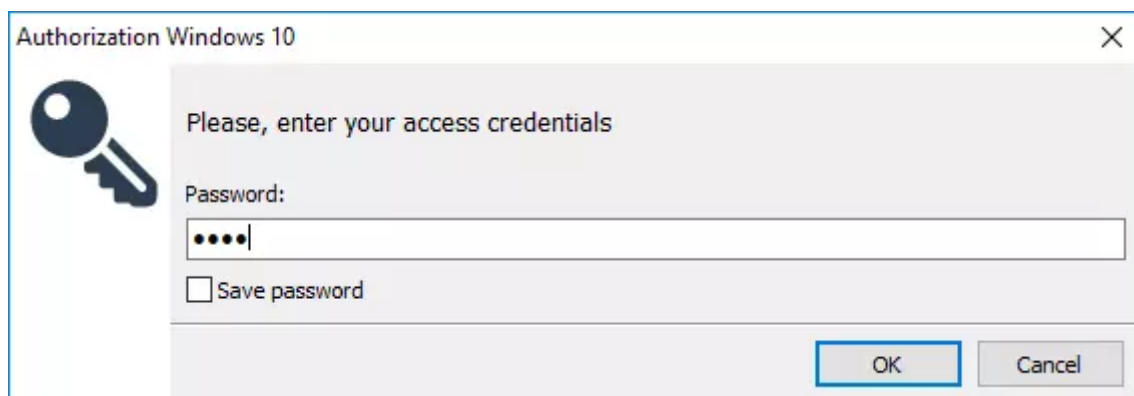
On the **General** tab select **Remote Registry** and double-click on a connection in your *address book*:



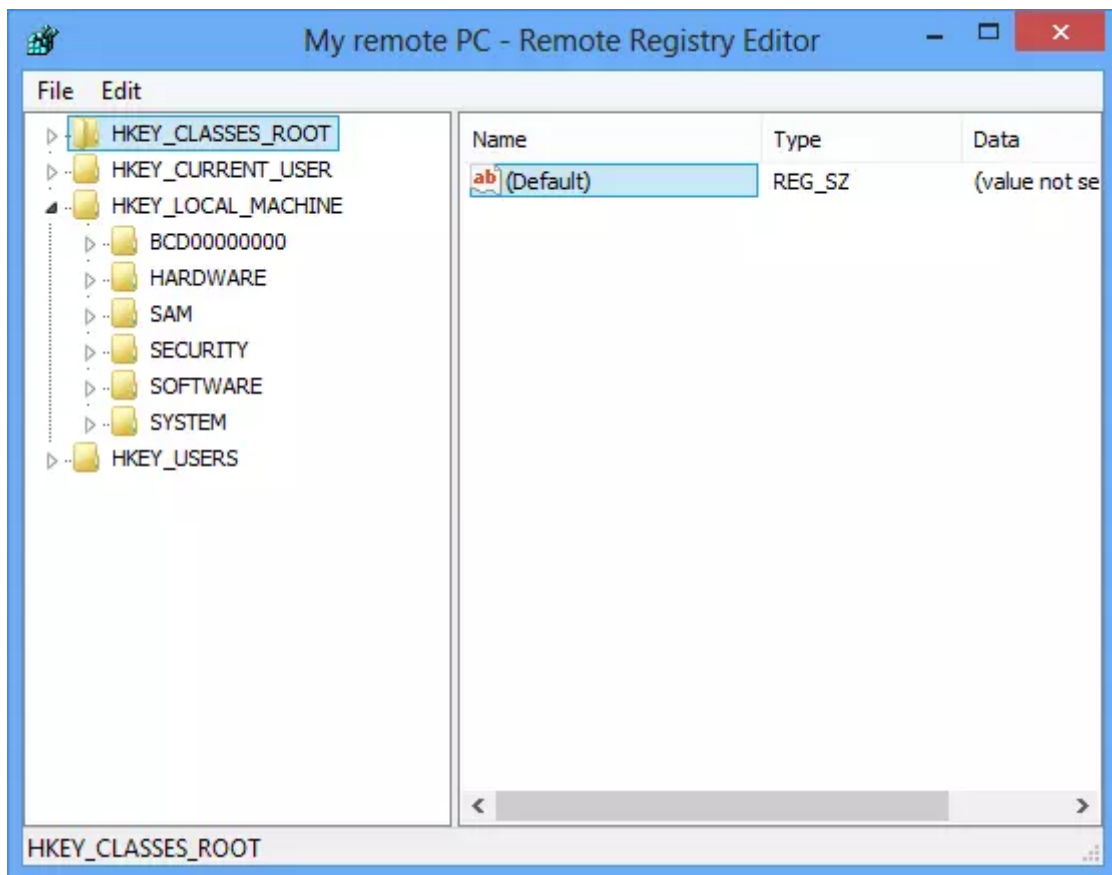
Alternatively, right-click on the connection icon and select **Other modes** → **Remote Registry** from the menu:



Enter the access password and click **OK**:



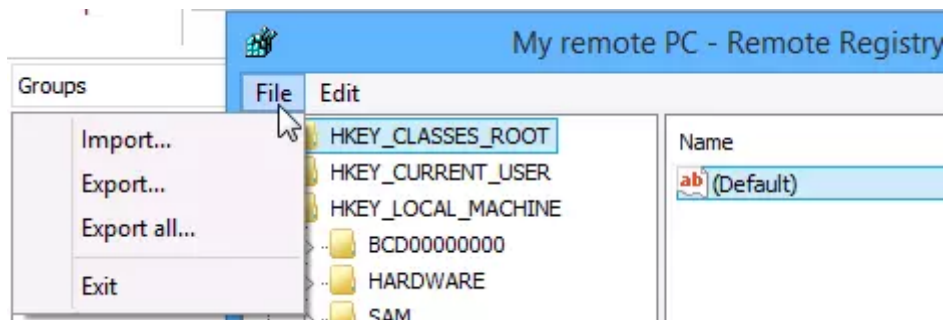
The **Remote Registry** window will open:



## Main menu

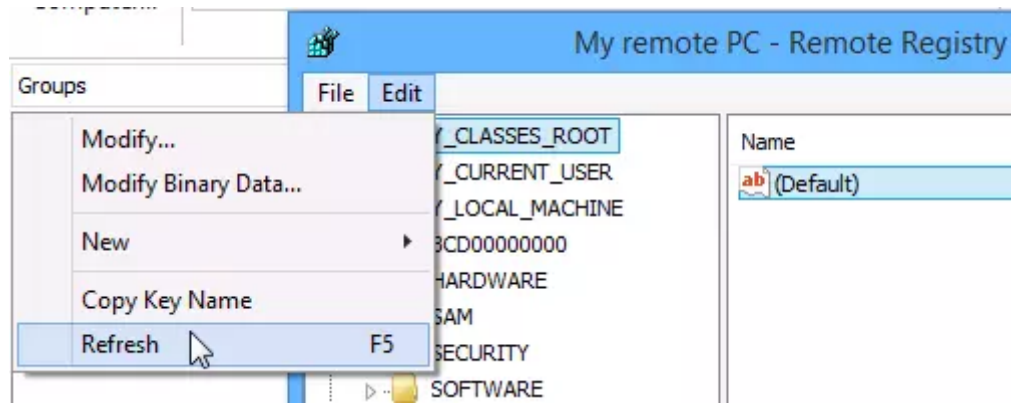
### *File menu*

Use the **File** menu commands to import and export registry data.



### *Edit menu*

Use the **Edit** menu commands to create new and modify existing registry keys and values.



## Related articles

- [About Remote Utilities: Viewer](#)
- [Connection modes: Execute](#)
- [Connection modes: Inventory manager](#)
- [Connection modes: Power control](#)
- [Connection modes: Send message](#)
- [Connection modes: Terminal](#)

URL: <https://www.remoteutilities.com/support/docs/remote-registry/>