

Logon and logoff

Contents

Logging on/off

Automatic logon

Re-logon command

Being *logged on* to a remote PC allows you to keep connection alive without actively using any of the connection modes.

When in the logged on state, the connection thumbnail shows a remote screen preview. You can also invoke an advanced hint window if you hover your mouse pointer over the thumbnail.

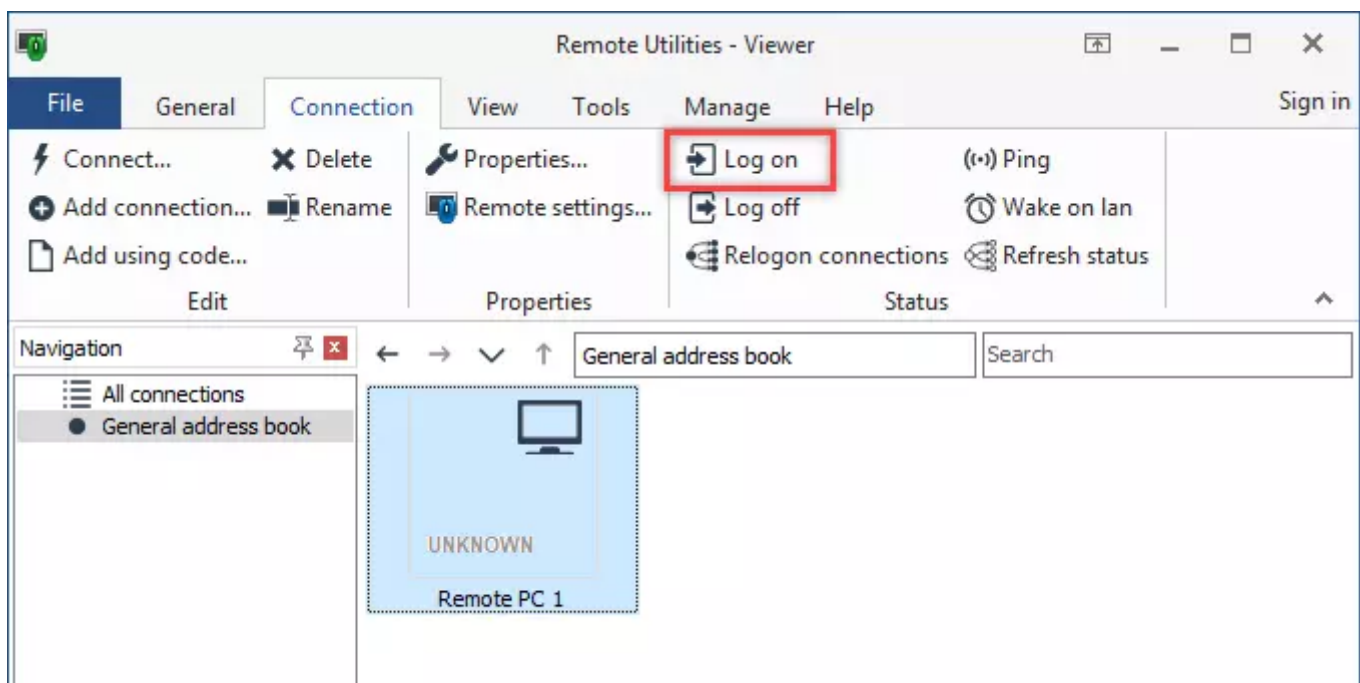
Important!

Remote Utilities logon has nothing to do with *Windows logon*. You can be logged on to a remote PC regardless of whether there is any Windows user actually logged on to the system or not.

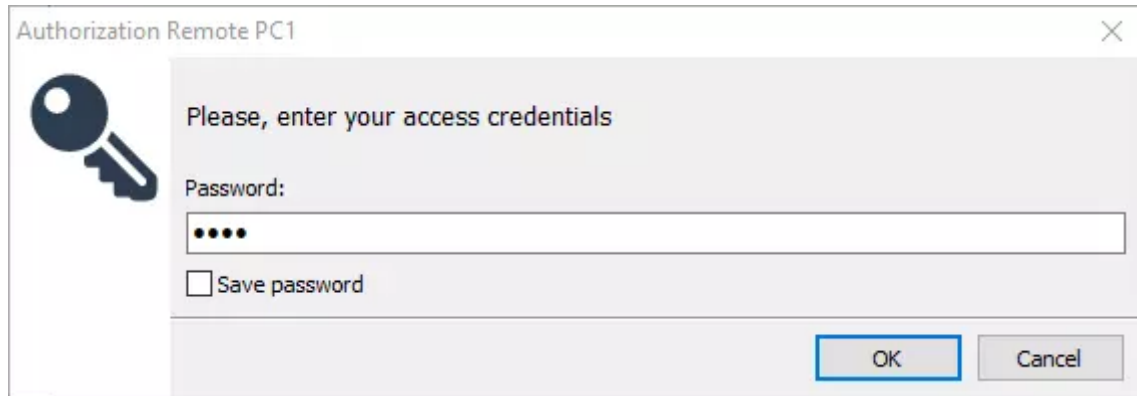
Logging on/off

To log on to a remote PC:

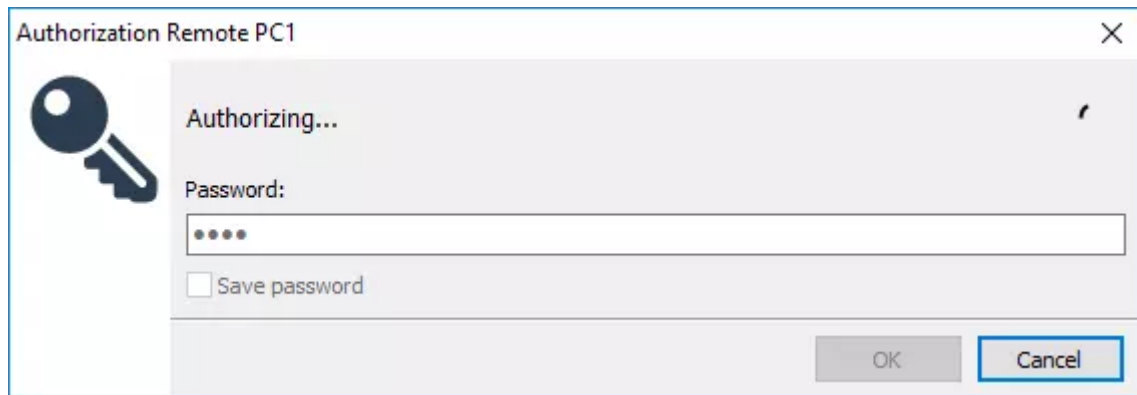
Select a connection or multiple connections in the *address book*. On the **Connection** tab click **Logon**:



Enter the access password for the remote *Host* and click **OK**:

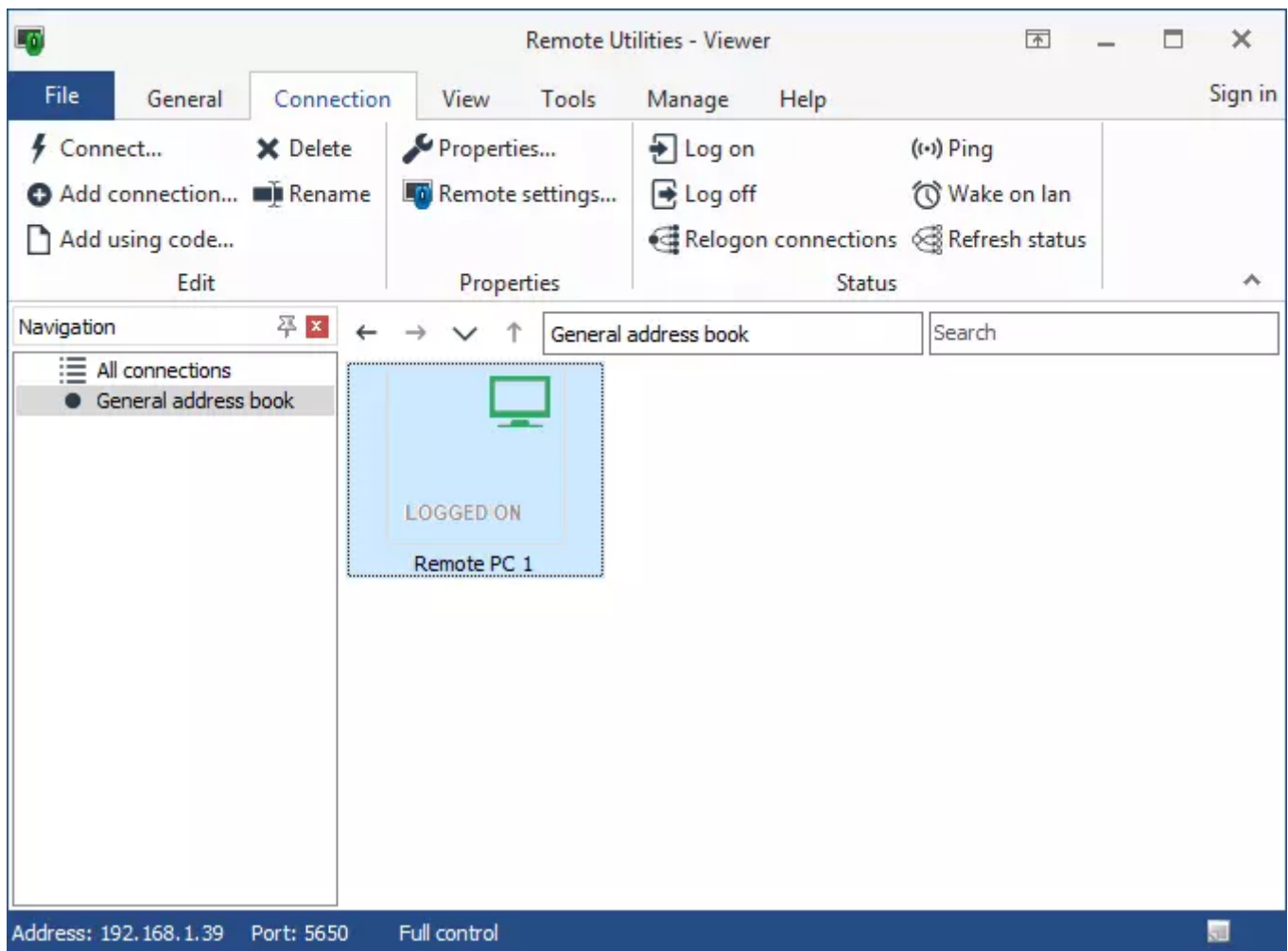


Wait until you get authenticated on the remote *Host*:

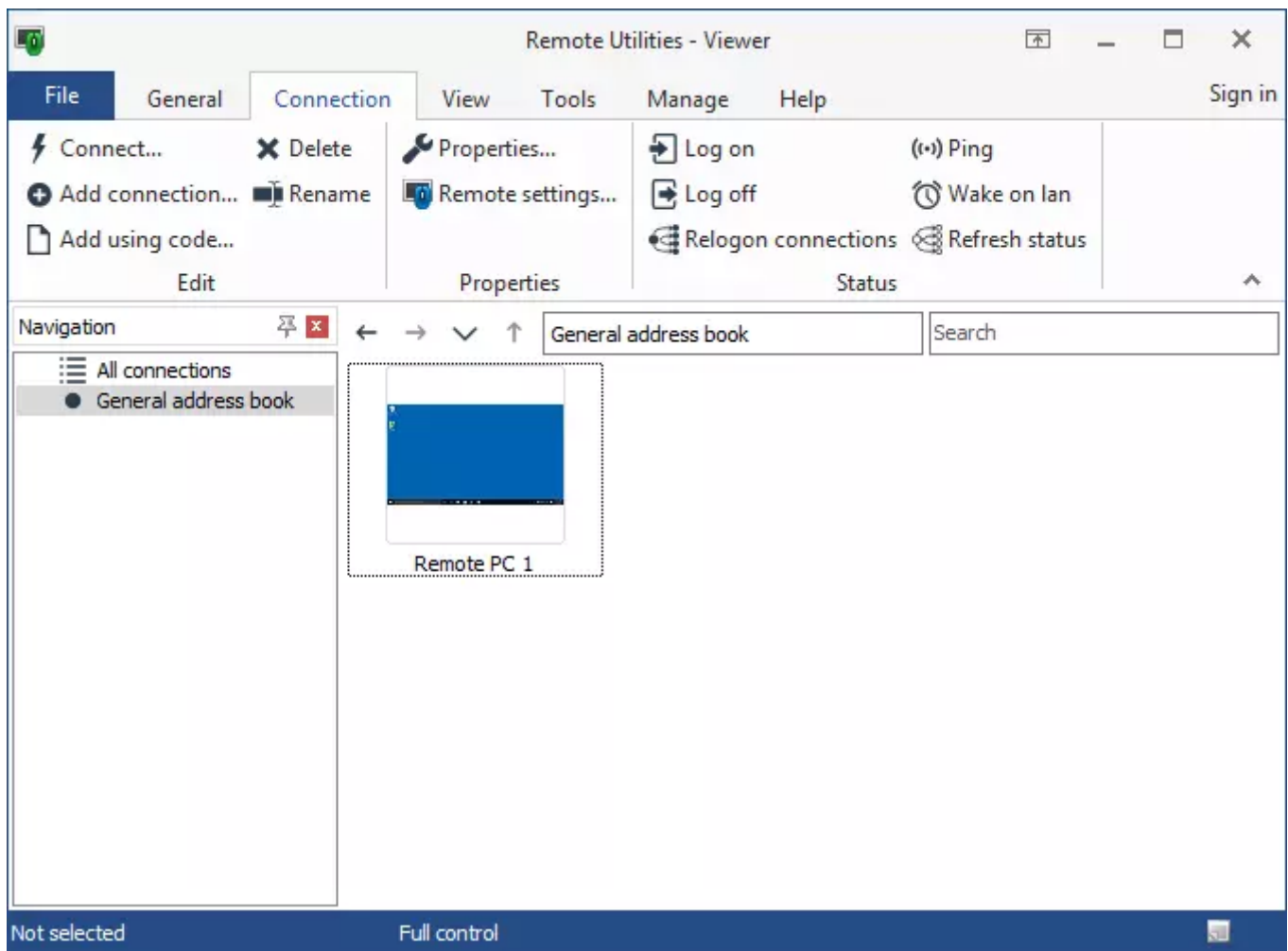


You might have a different authentication method enabled on the remote *Host* in which case the authentication prompt will differ from the above.

The connection icon will change to the Logged On status (learn about statuses):



In a short while the connection thumbnail will start displaying a preview of the remote screen:



Tip

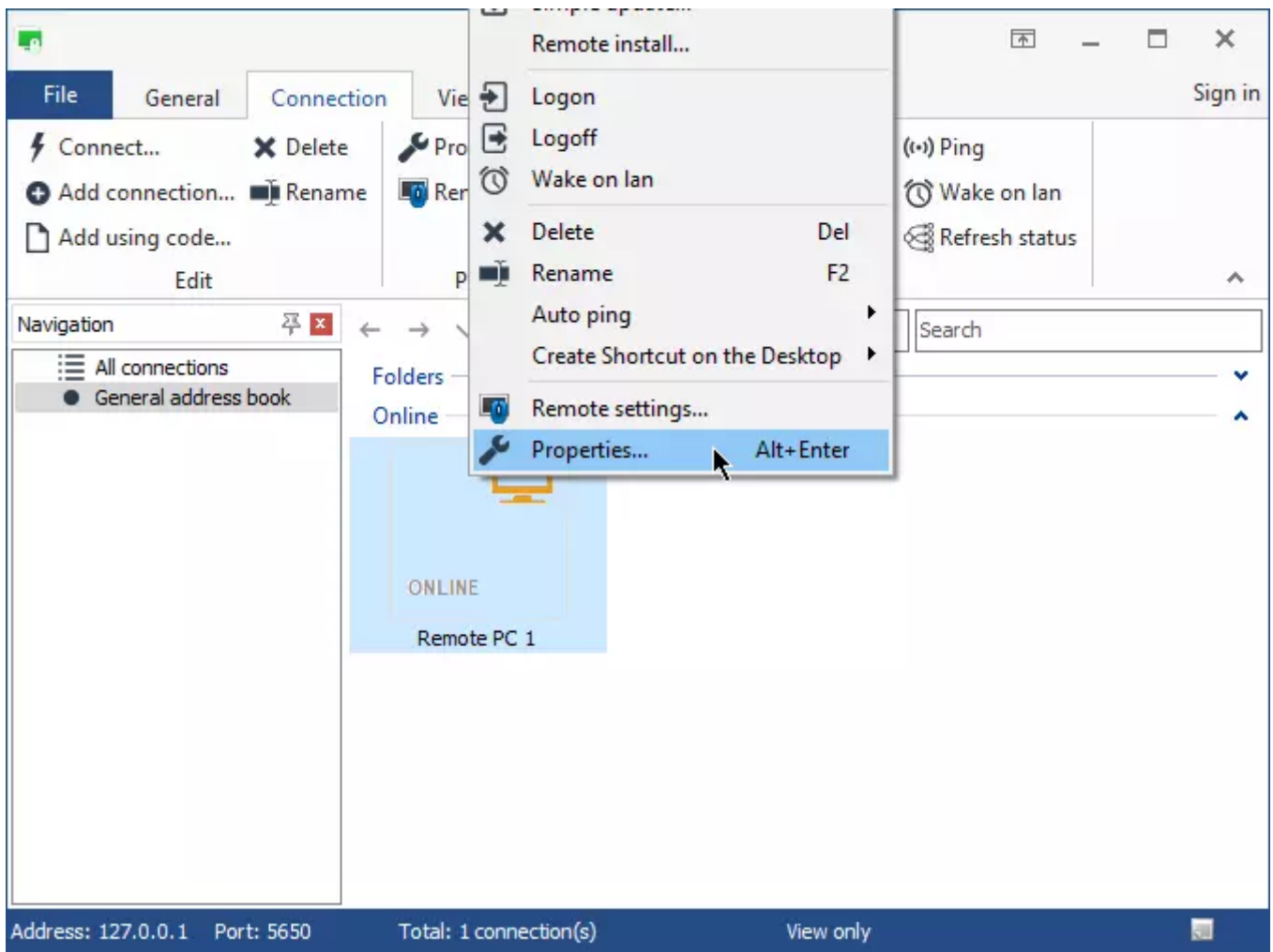
To disable previews on the thumbnails, uncheck the **Update thumbnails** checkbox on the **View tab** in Viewer options.

To log off, select a connection in the address book and click **Logoff** on the toolbar.

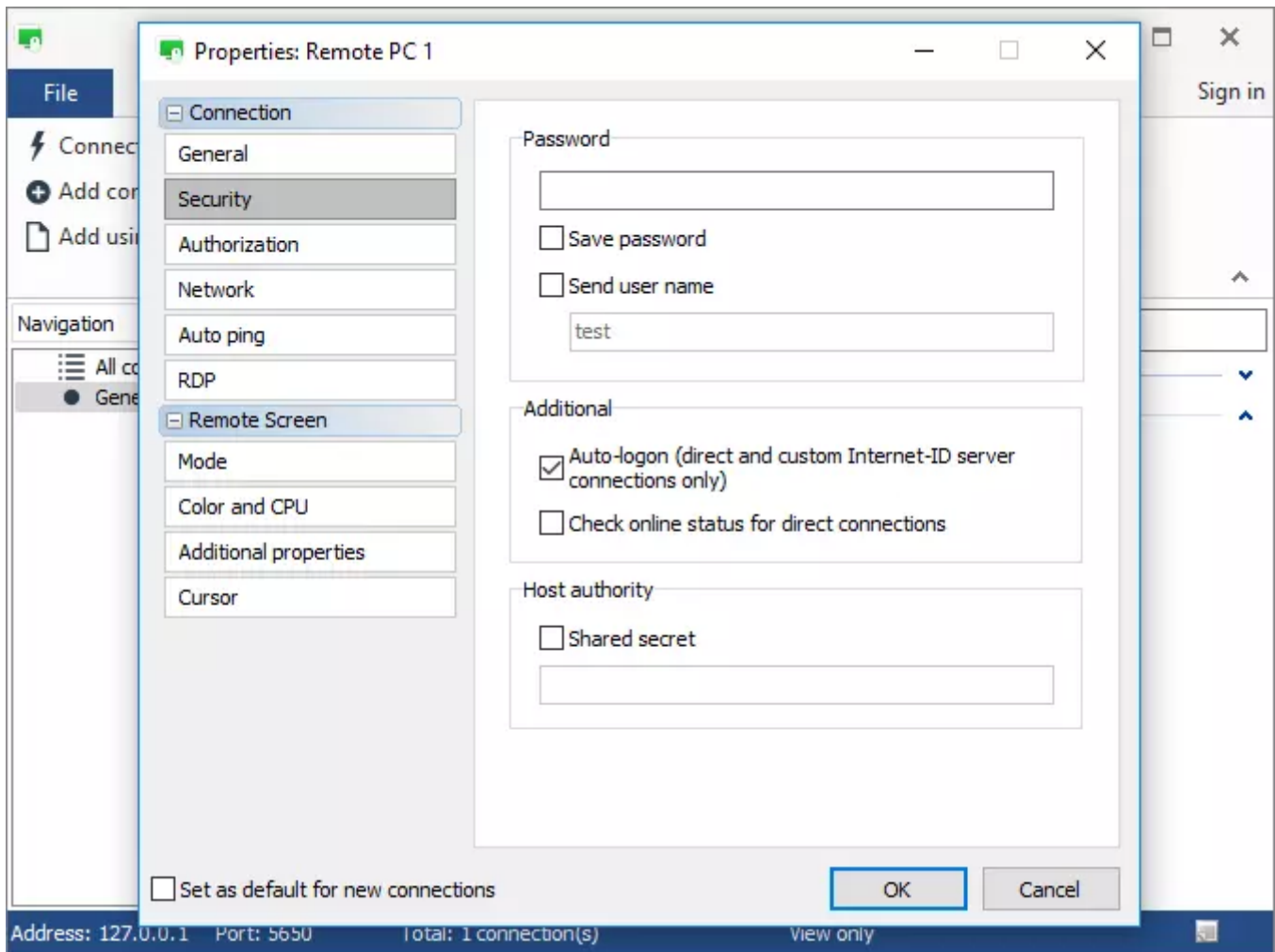
Automatic logon

You can set the Viewer to automatically log on to remote PCs.

Right-click the connection icon and select **Properties** from the menu:



Select the **Security** section and enable **Auto-logon**:



Important!

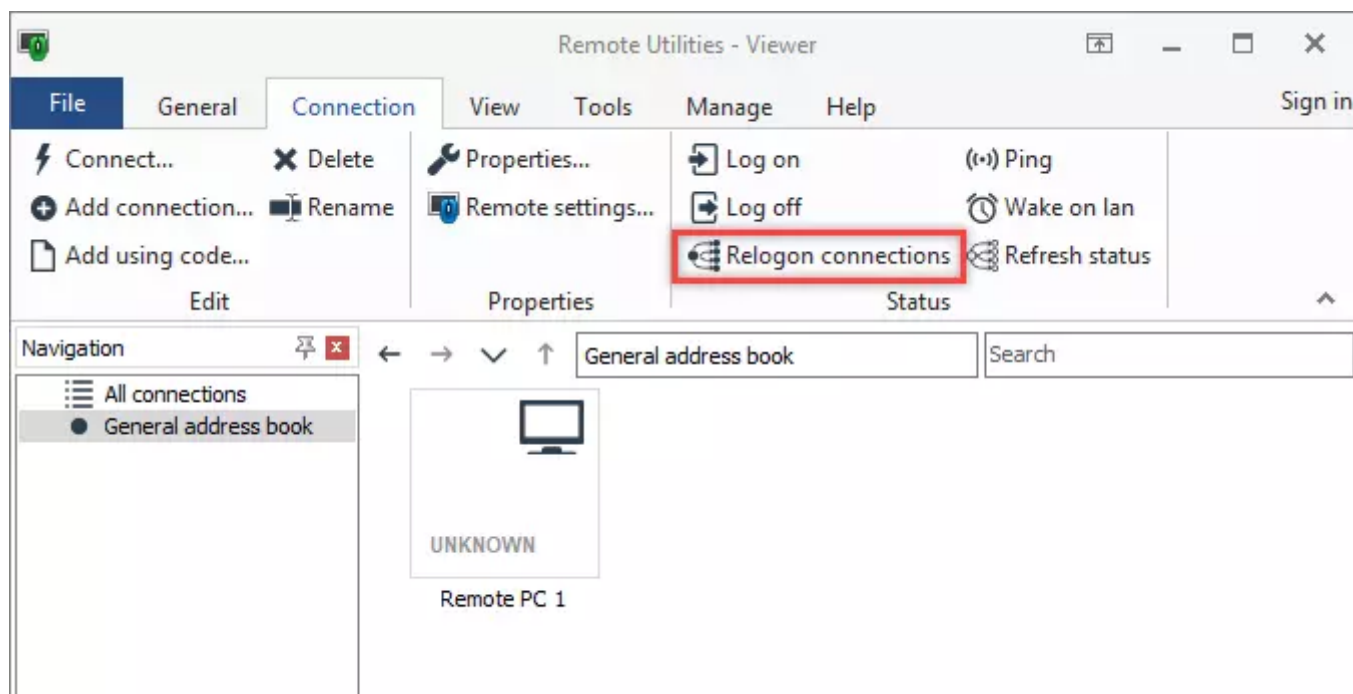
Currently, Auto-logon only works with *direct connections* as well as with *Internet-ID* connections established through the *self-hosted server*. The Auto-logon option will not work for Internet-ID connections that use our public Internet-ID server.

Re-logon command

The `Relogon connections` command makes all the connections in your address book to re-log on. This command will only apply to connections that meet ALL the of the following criteria:

- The Auto-logout option enabled (see above);
- Access password saved.

To initiate a re-logout in the Viewer, navigate to the **Connection** tab and click **Relogon connections**:



Related articles

- [Address book: About address books](#)
- [Address book: Adding connections](#)
- [Address book: Editing connections](#)

URL: <https://www.remoteutilities.com/support/docs/logon-and-logout/>