

File Transfer mode

Contents

[Starting File Transfer mode](#)

[Copying or moving files and folders](#)

[Using tabs](#)

[Main menu](#)

[File menu](#)

[Tabs menu](#)

[Access menu](#)

[Bookmarks](#)

[Hot keys](#)

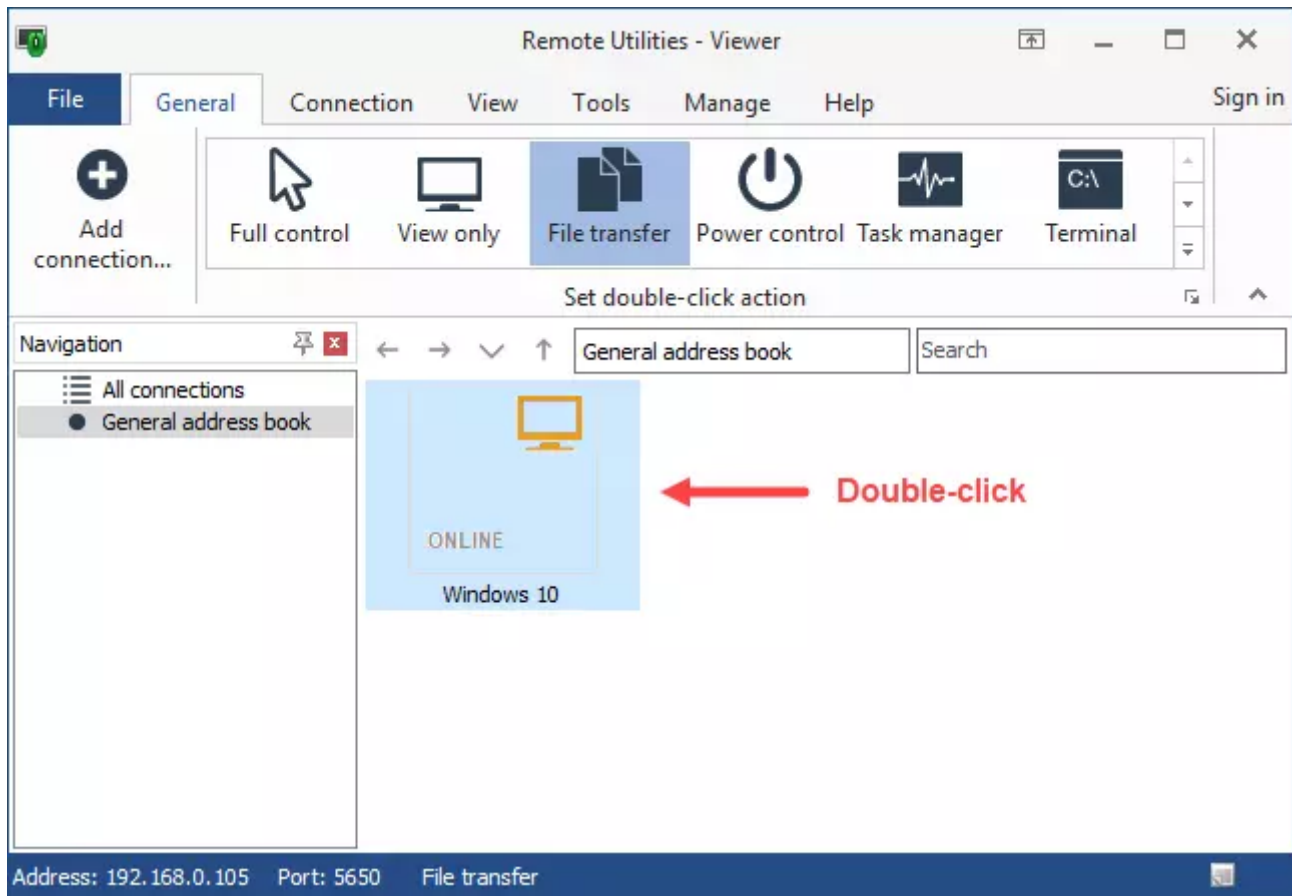
[Drag and drop](#)

[Smart download resumption](#)

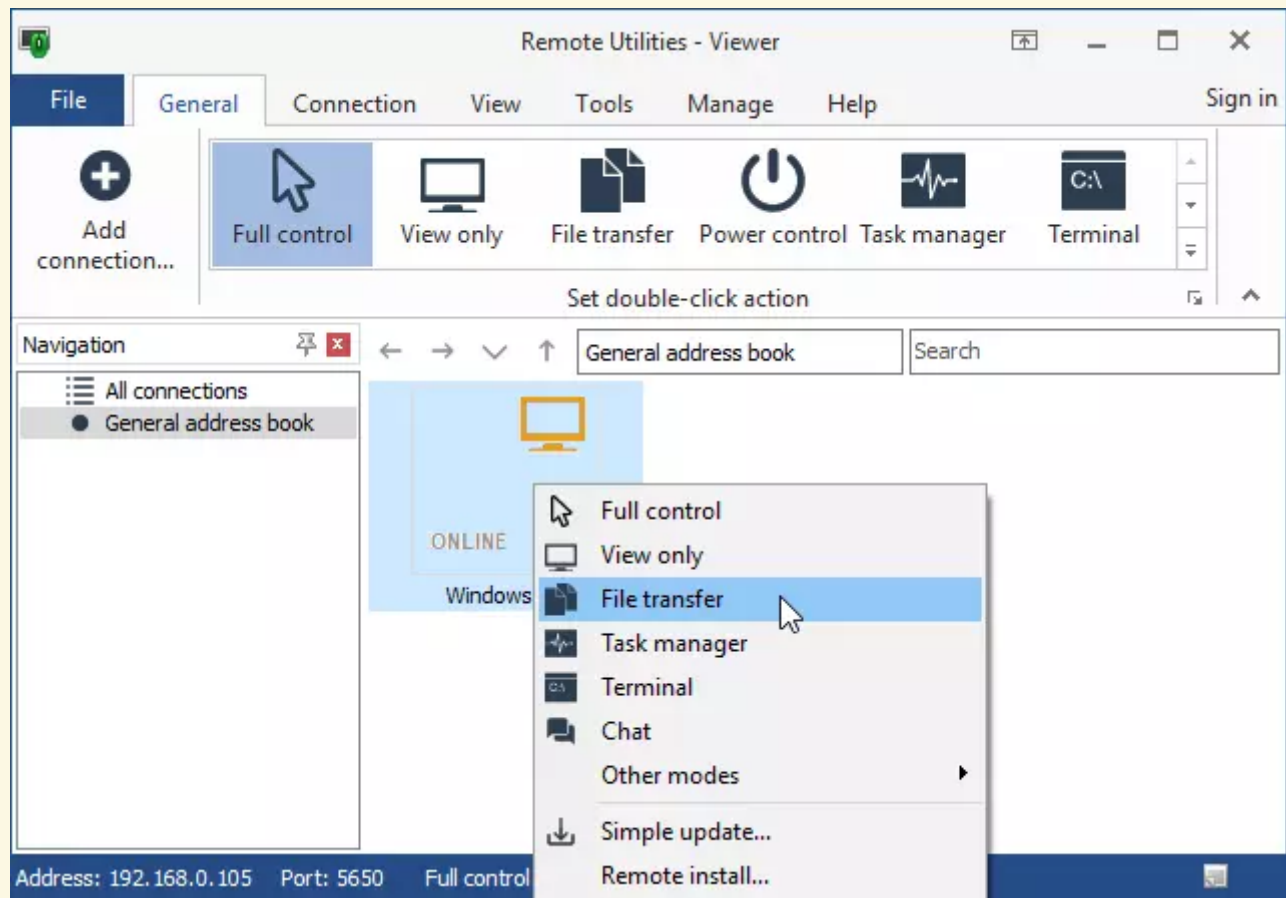
The remote **File Transfer** mode allows you to quickly and securely copy files and folders to and from a remote computer. This file sharing mode can be run during a regular remote access session from within the *Full Control and View* mode (see [toolbar](#)) or run immediately from the main Viewer interface as described below.

Starting File Transfer mode

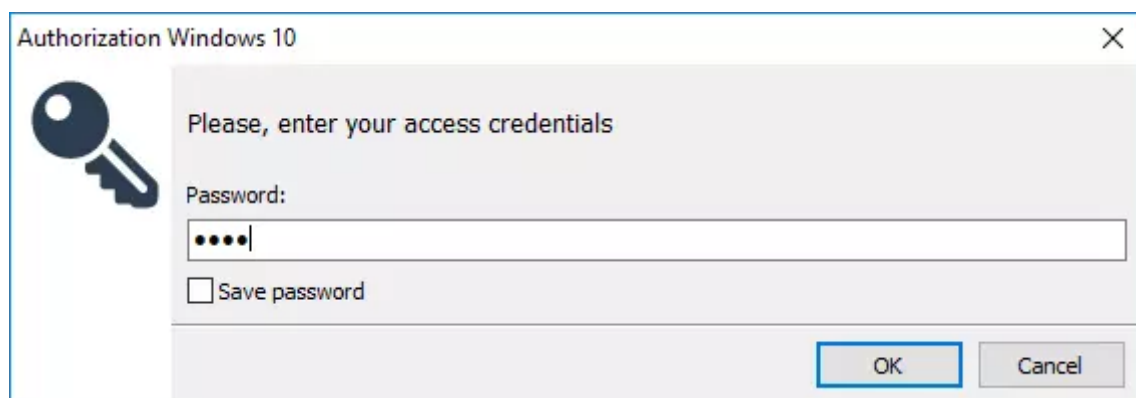
On the **General** tab select **File Transfer** and double-click on a connection in your *address book*:



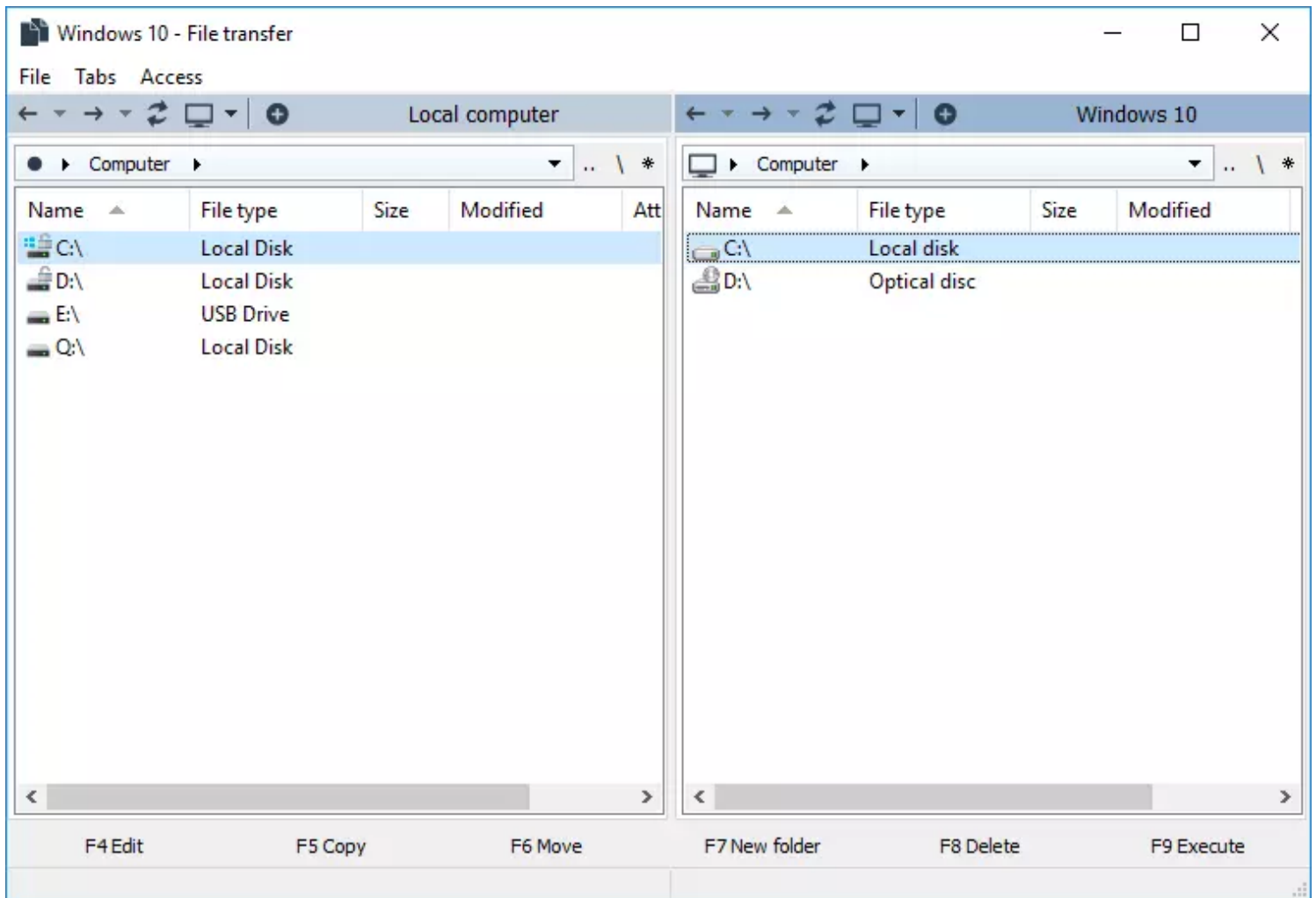
Alternatively, right-click on the connection icon and select **File Transfer** from the menu:



Enter the access password and click **OK**:



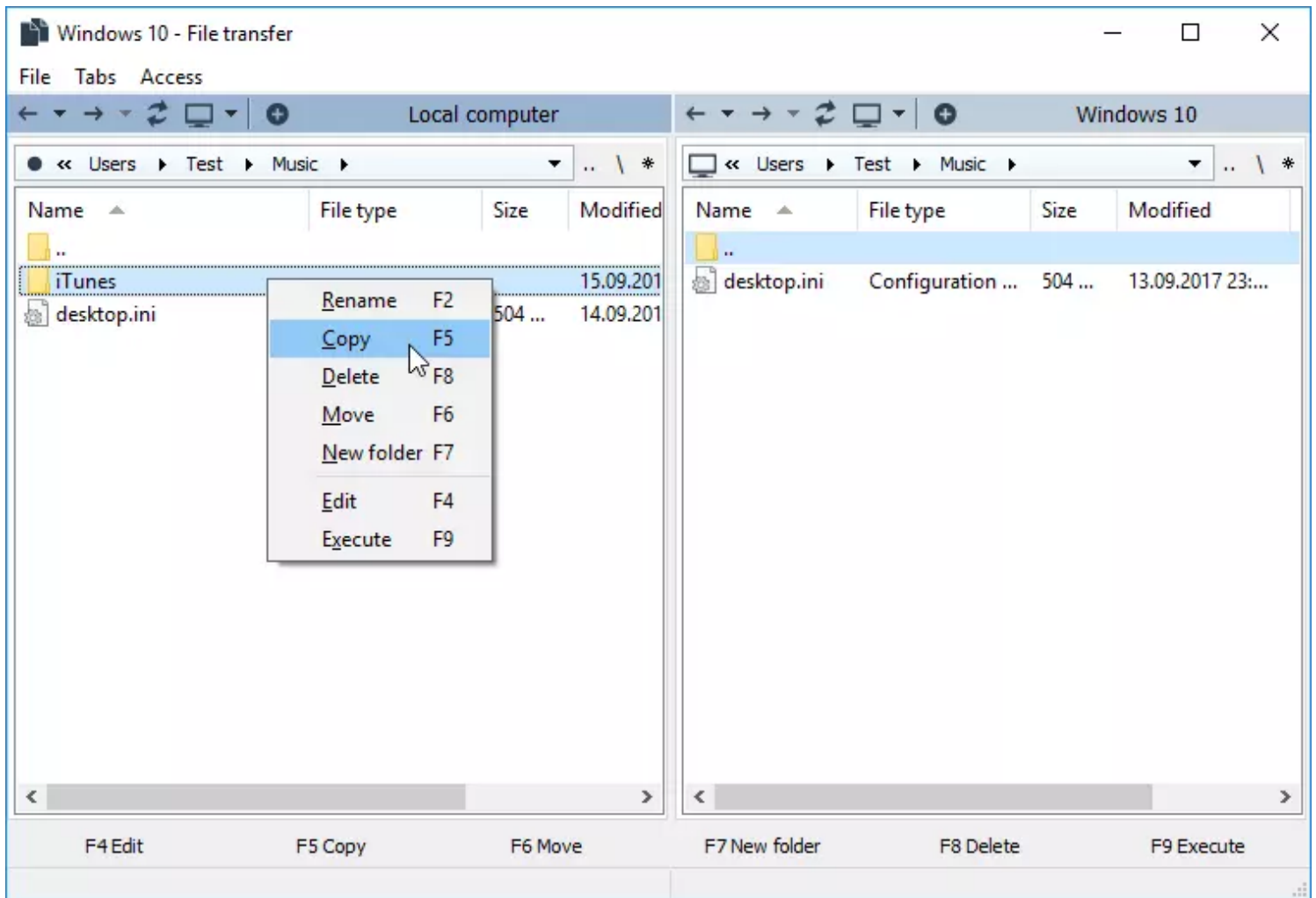
A **File Transfer** mode window will open:



Copying or moving files and folders

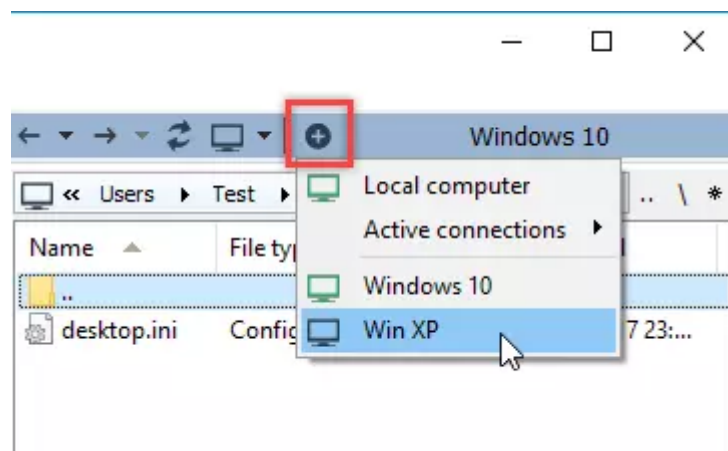
To copy or move a file or folder to a remote desktop:

1. Open the source folder in one pane and the destination folder in the other pane.
2. Select the file or folder you want to copy/move, right-click on it and select **Copy** or **Move**:

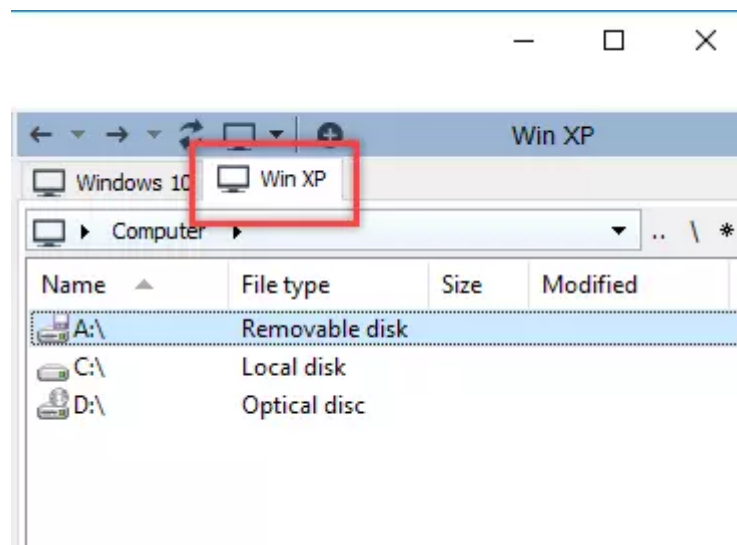


Using tabs

You can use tabs to open several remote devices side by side in the same **File Transfer** window. To open another remote connection in a new tab, click on the plus icon and select the target connection from your *address book*.



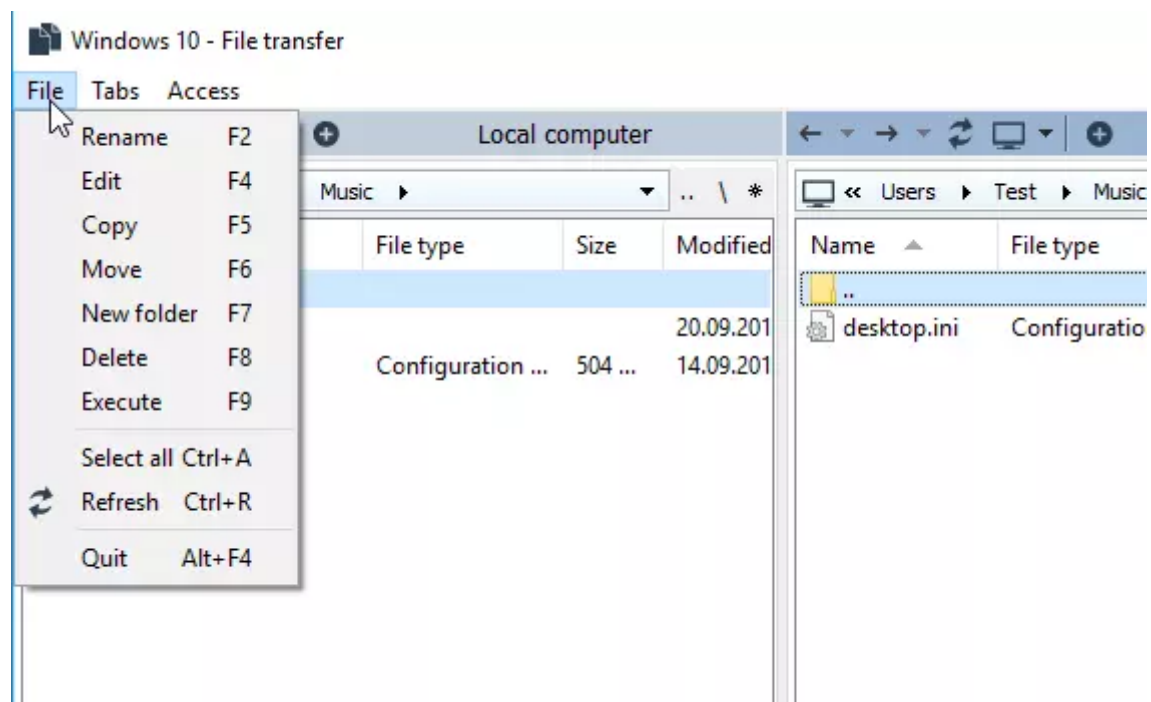
The connection will open as a new tab on the tab bar:



Main menu

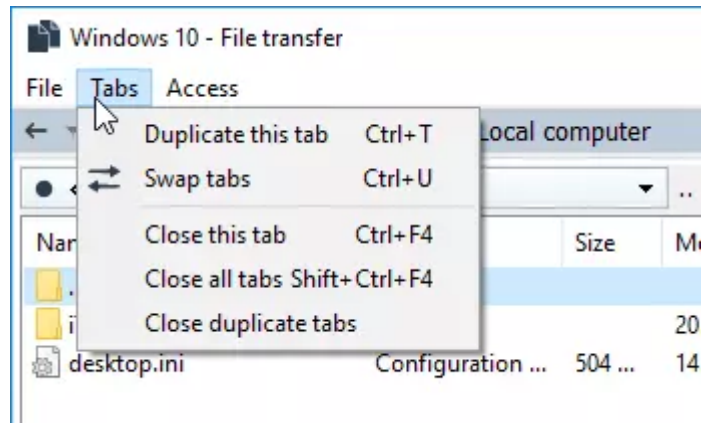
File menu

This menu contains commands that you can apply to files and folders selected in the File Transfer window. You can access the same commands by right-clicking on files and folders in the list. The **Quit** command closes the File Transfer mode.



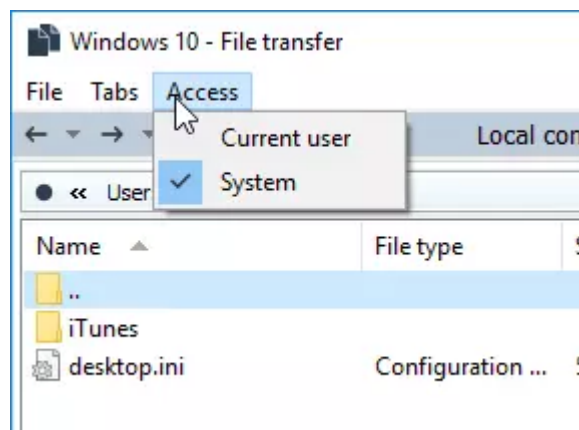
Tabs menu

The commands in this menu apply to either a selected tab or to all open tabs.



Access menu

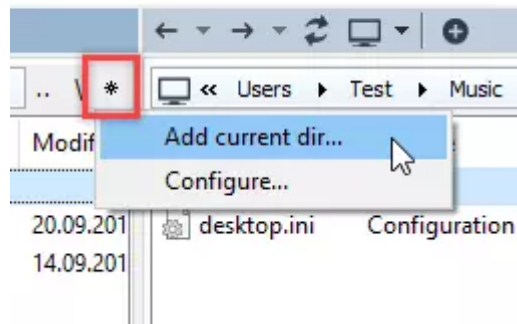
Use the access menu to switch from **Current user** to **System** account if you have issues copying/moving files to the remote PC.



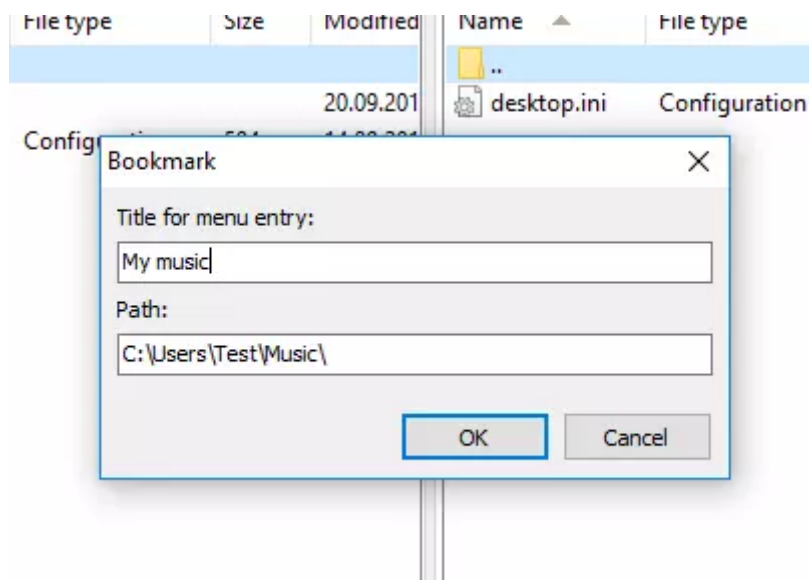
Bookmarks

You can add frequently-used folders to your bookmarks:

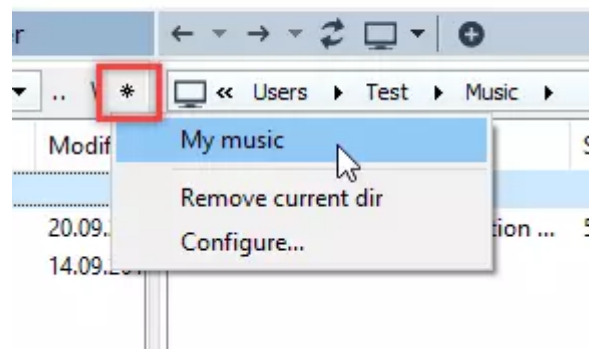
1. In the left pane click the asterisk button and select **Add current dir:**



2. The **Bookmark** window will open. Enter the bookmark title and path and click **OK**:

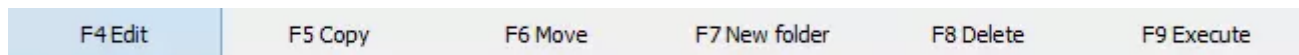


3. To open a previously-added bookmark click the asterisk button and select the bookmark from the list:



Hot keys

You can access frequently-used commands at the bottom of the File Transfer window. To run a command, either click on it or press the associated **F4** - **F9** key on the keyboard.



Drag and drop

You can drag files and folders (both local and remote) from the File Transfer window and drop them on to a target location on the local computer or vice versa.

Smart download resumption

If the file download was interrupted, the download will resume automatically the next time you initiate a remote control session.

Related articles

- [About Remote Utilities: Viewer](#)
- [Getting Started: Keyboard shortcuts](#)

URL: <https://www.remoteutilities.com/support/docs/file-transfer/>