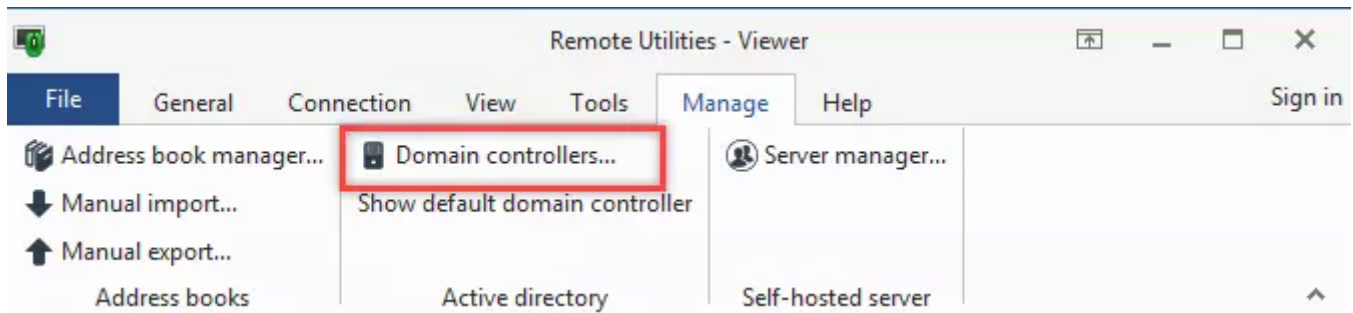


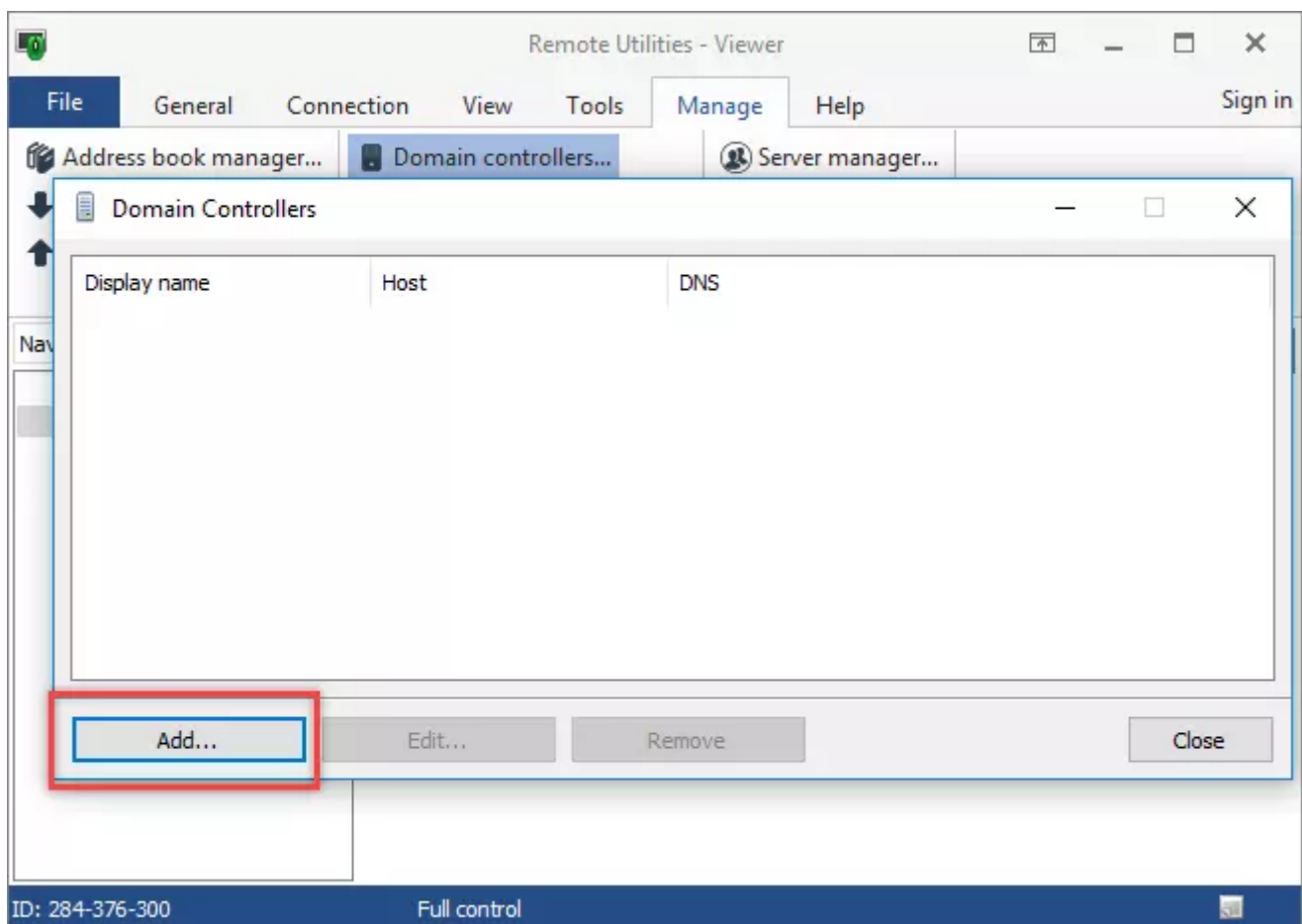
Adding domain controllers

To add a new domain controller:

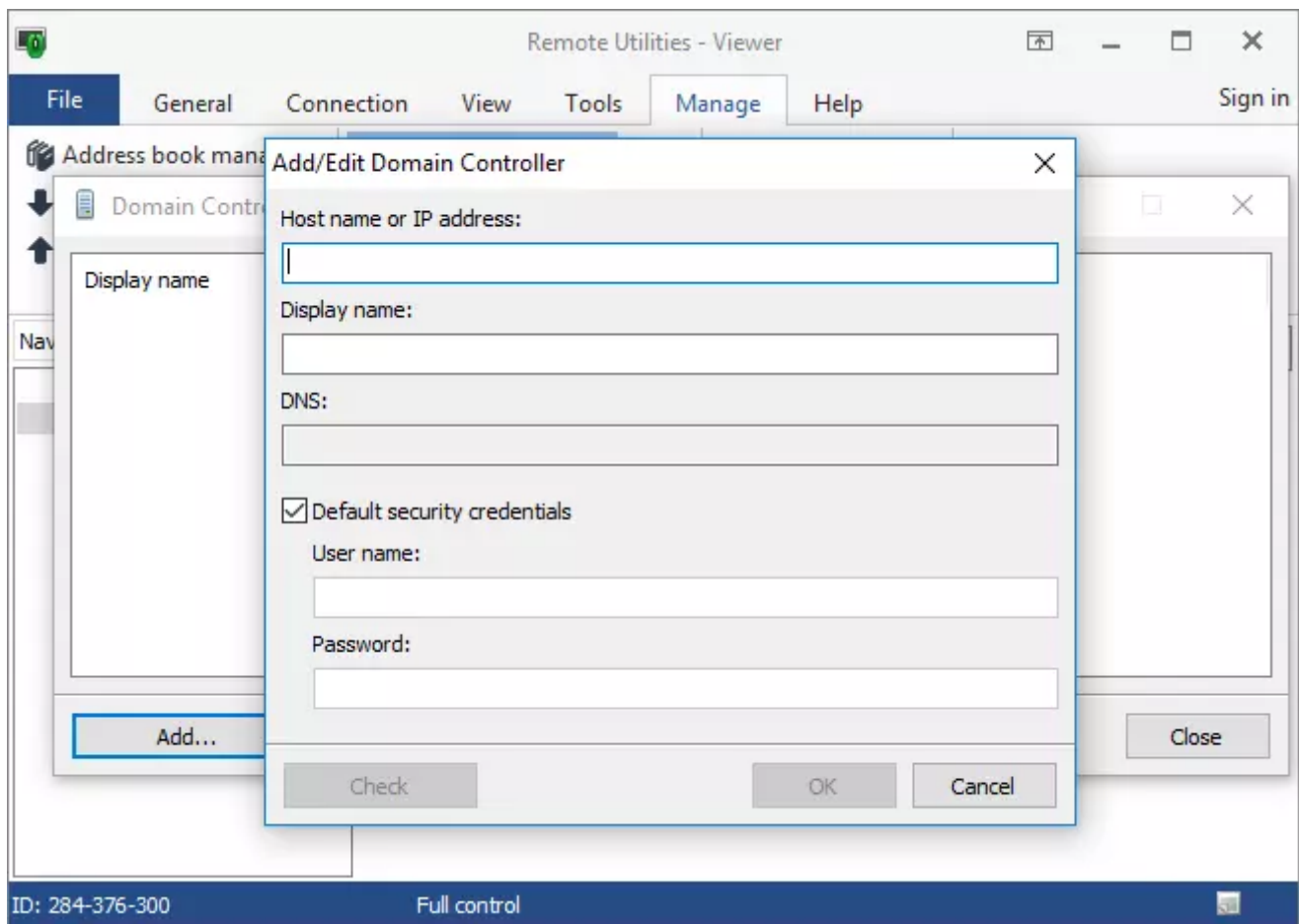
1. On the **Manage** tab, click **Domain controllers**:



2. In the **Domain Controllers** window, click **Add**:



3. Populate the fields with your domain controller data and click **OK**:



- **Host name or IP address** - the host name or the IP address of a domain controller
- **Display name** - how the domain controller is shown in the Viewer tree
- **DNS** - DNS server address
- **Default security credentials** - leave this checked if you want to access the domain controller using the current user credentials. Otherwise, specify different credentials.

Related articles

- [Active Directory: AD authentication](#)
- [Active Directory: Fetching AD records](#)

URL: <https://www.remoteutilities.com/support/docs/adding-domain-controllers/>